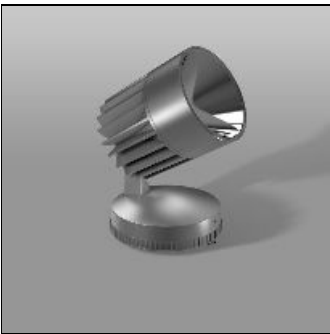


Product data sheet

ALU-STAR MAXI
721812.004.76
RZB

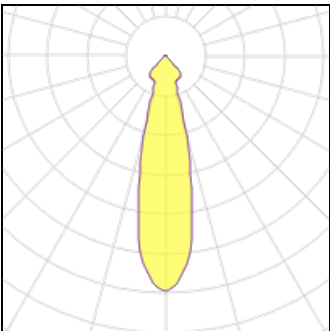


IP
65

IK
07

Series: ALU-STAR maxi High efficient LED outdoor floodlight. Housing made of corrosion-resistant die-cast aluminium, seawater resistant powder-coated. Thermally decoupled driver compartment, integral driver. With membrane valve as a standard to avoid condensed water. Rotation-symmetric reflector made of reflex-boosted MIRO-SILVER. Cover clear single-pane toughened glass. Spot, medium beam. COB LED with socket for easy replacement. Stainless steel fixing clips with compensation for drill hole deviations. Rotation angle can be adjusted and locked in 3,6° steps, tilt angle in 5° steps with angular scale. Piano-key terminal up to 28x5x2,5 mm², max cable Ø 13mm, comes with second cable gland for loop through. Colour: silver, matt (approx. RAL9006) Length: 305mm Width: 240mm Height: 310mm Lamp: LED System power: 88W Rated luminous flux: 9700lm Luminous efficiency: 110lm/W Control gear: Converter, dimmable, DALI Protection class: I Type of protection: IP65

Light output 1 (integrated)



| | | | |
|--------------------|----------|-------------|--------|
| Lamp type | LED | CCT | 3000 K |
| Nominal lamp power | 88 W | CRI | 80 |
| Total flux | 9700 lm | LOR | 100% |
| Luminous efficacy | 110 lm/W | Total power | 88 W |

Mounting mode

Standing / Bollard, Pole integrated

Shape and measurements

Length: 9.45 in

Width: 12.01 in

Height: 12.20 in

Adjustability

Tiltable

Electric

System power: 88 W

Protection

IP: 65

IK: 07