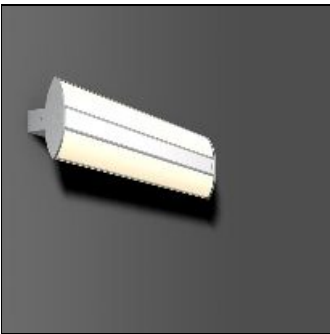


Product data sheet

LAVANO WING
451194.000.0
RZB

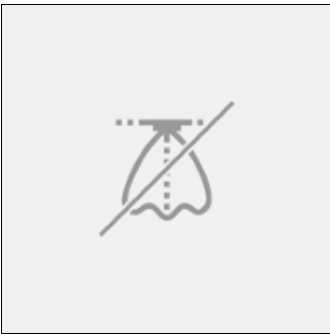


IP
40

IK
02

Series: Lavano WING Type of Protection: IP 40 Protection Class: I Voltage: 220 - 240 V / 50 - 60 Hz Modular design, base aluminium, anodised stainless steel, brushed, tapered diffuser, plastic (PMMA), opal, allows for brilliant glittering light. Line design of the diffuser possible on request through inserted transparent coloured perspex rod, LED and decorative board included depending on version. The possible colours of the perspex rod (red, green, blue) are also suitable for representing the corporate identity of a company. Available Colours: aluminium Type of Installation: Ceiling mounting, Wall (surface) Dimensions: L 580, B 150, H 80 Lamp: LED Life time: 50000 h (L90/B10) Colour Temperature: 3000K Socket 1: without socket Operating Mode Lamp 1: Constant voltage supply Safety Marks: F-mark Impact Protection: IK02 (0,20 Joule) Luminaire flux LED: 2550lm System power: 23W Beam Angle: 180°/109° Number of fittings B10A: 10 Number of fittings B16A: 17 Number of fittings C10A: 16 Number of fittings C16A: 26 Inrush current: 49A Unified Glare Ratio: 19,8 EEC: A+

Light output 1 (integrated)



Lamp type	LED	CCT	3000 K
Nominal lamp power	23 W	CRI	80
Total flux	2550 lm	LOR	100%
Luminous efficacy	111 lm/W	ULOR	59%
		Total power	23 W

Mounting mode

Wall mounted

Shape and measurements

Length: 5.91 in
Width: 22.83 in
Height: 3.15 in

Adjustability

Fixed

Electric

System power: 23 W

Protection

IP: 40
IK: 02