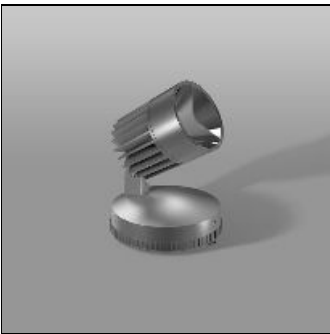


Product data sheet

ALU-STAR MIDI
721808.004.1.76
RZB

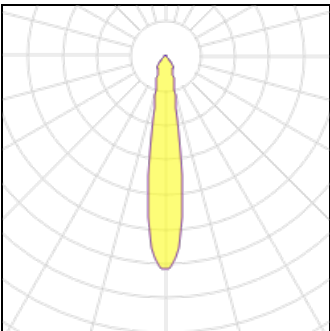


IP
65

IK
07

Series: ALU-STAR midi High efficient LED outdoor floodlight. Housing made of corrosion-resistant die-cast aluminium, seawater resistant powder-coated. Thermally decoupled driver compartment, integral driver. With membrane valve as a standard to avoid condensed water. Rotation-symmetric reflector made of reflex-boosted MIRO-SILVER. Cover clear single-pane toughened glass. Spot, medium beam. COB LED with socket for easy replacement. Stainless steel fixing clips with compensation for drill hole deviations. Rotation angle can be adjusted and locked in 3,6° steps, tilt angle in 5° steps with angular scale. Piano-key terminal up to 28x5x2,5 mm², max cable Ø 13mm, comes with second cable gland for loop through. Colour: silver, matt (approx. RAL9006) Length: 255mm Width: 240mm Height: 255mm Lamp: LED System power: 56W Rated luminous flux: 6450lm Luminous efficiency: 115lm/W Control gear: Converter, dimmable, DALI Protection class: I Type of protection: IP65

Light output 1 (integrated)



| | | | |
|--------------------|----------|-------------|--------|
| Lamp type | LED | CCT | 4000 K |
| Nominal lamp power | 56 W | CRI | 80 |
| Total flux | 6450 lm | LOR | 100% |
| Luminous efficacy | 115 lm/W | Total power | 56 W |

Mounting mode

Standing / Bollard, Pole integrated

Shape and measurements

Length: 9.45 in

Width: 10.04 in

Height: 10.04 in

Adjustability

Tiltable

Electric

System power: 56 W

Protection

IP: 65

IK: 07