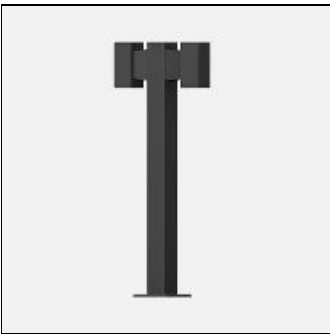


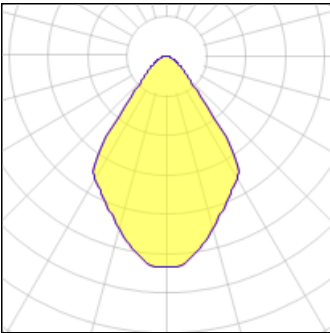
Product data sheet

JET 48 SQUARE BOLLARDS
JE-10565-VW-W40
LIGMAN



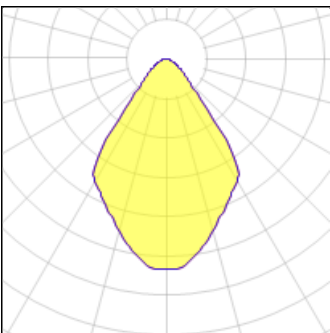
- Lamp COB - CRI Ra > 80 - MacAdam Ellipse 3 SDCM - Colour 3000K , 4000K - Die-cast aluminium housing and extruded aluminium column pre-treated before powder coating ensuring high corrosion resistance - Single cable entry - Stainless steel fasteners in grade 316 - Durable silicone rubber gasket - Clear toughened glass - Integral control gear

Light output 1 (integrated)



Lamp type	LED	CCT	4032 K
Nominal lamp power	15 W	CRI	80
Total flux	959 lm	LOR	100%
Luminous efficacy	64 lm/W	Total power	15 W

Light output 2 (integrated)



Lamp type	LED	CCT	4032 K
Nominal lamp power	15 W	CRI	80
Total flux	959 lm	LOR	100%
Luminous efficacy	64 lm/W	Total power	15 W

Mounting mode

Standing / Bollard

Shape and measurements

Length: 19.13 in

Width: 4.02 in

Height: 47.24 in

Weight: 10.1 kg

Adjustability

Fixed

Glare protection

Glare protection: UGR < 19

Electric

System power: 30 W

Voltage: 230 V AC

Ballast: ECG

Controller: Dimmable 1..10V, DALI

Appliance Class: I

Design

Color of housing: Black, White, Silver gray

Protection

IP: 65

IK: 08

Surface temperature: 40°C