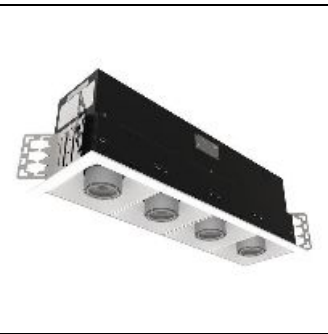


# Product data sheet

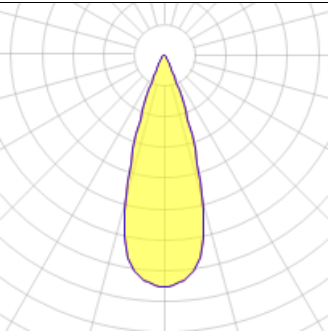
LAM4B 4-INCH NEW CONSTRUCTION RECESSED MULTI-HEAD  
LAMR4B412R359027DE01021MB  
COOPER LIGHTING



IP  
47

Distributions: 10° - 70°; Optic holds 2 lens media, Lockable 365° rotation and 45° tilt holds any aiming position, Downlight, accent, and pinhole reflectors;; 6 color temperatures: 2400K, 2700K, 3000K, 3500K, 4000K and 5000K CCT, CRI: 90 or 97; D2W™ option from 3000K to 1850K, Lumens: 800 and 1000, Matte black, matte white, and matte metallic silver paint finishes, 0-10V 1% dimming driver; Optional 100%-1% DALI, 0-10V, or DMX drivers, Mud in accessory for seamless transition, Wavelinx and DLVP connected systems; 5-year warranty

## Light output 1 (integrated)



Lamp type	LED	CCT	3000 K
Nominal lamp power	54.1 W	CRI	100
Total flux	5215 lm	LOR	100%
Luminous efficacy	96 lm/W	Total power	54.1 W

## Mounting mode

Ceiling recessed

## Shape and measurements

Height: 0.39 in  
Diameter: 2.00 in

## Adjustability

Fixed

## Electric

System power: 54.1 W

## Protection

IP: 47