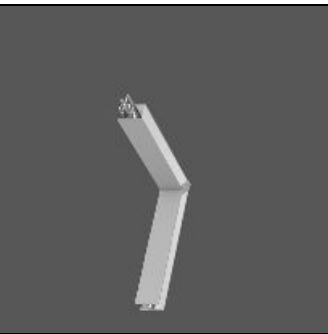


Product data sheet

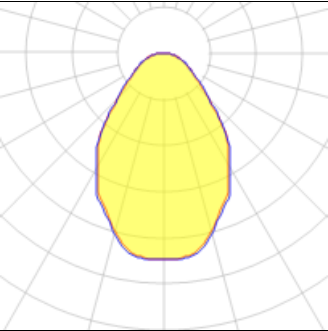
LOUI 27
90-LM103-45L
RZB



IP
00

Surface module LED/8,7W-4000K L235x235L Attention: This article is only available in combination with a Less is more 27 configuration. You can find our Less is more 27 configurator under <https://www.rzb.de/en/products/loui-configurator/>

Light output 1 (integrated)



| | | | |
|--------------------|---------|-------------|--------|
| Lamp type | LED | CCT | 4000 K |
| Nominal lamp power | 10 W | CRI | 80 |
| Total flux | 720 lm | LOR | 100% |
| Luminous efficacy | 72 lm/W | Total power | 10 W |

Mounting mode

Wall mounted

Shape and measurements

Length: 9.25 in
Width: 9.25 in
Height: 1.26 in

Adjustability

Fixed

Electric

System power: 10 W

Protection

IP: 00