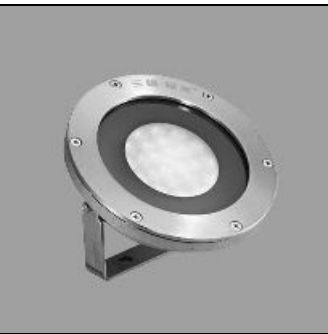


# Product data sheet

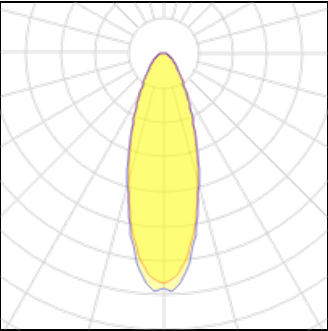
银海系列LED水池灯  
PAK531320 PAK-LED-J06-030-Y-Z  
PAK



IP  
68

壳体:不锈钢+钢化玻璃; 反光罩:光学透镜; 功率:30W; 光源:SMD LED; 色温:有3000K、6000K可选; 显色性:Ra80+; 光束角:30°; 灯具总输出流明:1800lm; 使用寿命:30000Hrs; 防护等级:IP68; 适配电器:LED恒压驱动电源; 主电压:24V; 功率因数:0.95; 安装方式:支架式安装; 备注:产品配置呼吸器及0.3M防水橡胶电缆线。

## Light output 1 (integrated)



Lamp type	LED	CCT	3000 K
Nominal lamp power	30 W	CRI	80
Total flux	1800 lm	LOR	100%
Luminous efficacy	60 lm/W	Total power	30 W

## Mounting mode

Standing / Bollard, Floor mounted

## Shape and measurements

Length: 6.81 in  
Width: 6.91 in  
Height: 2.99 in

## Adjustability

Tiltable

## Electric

System power: 30 W

## Protection

IP: 68