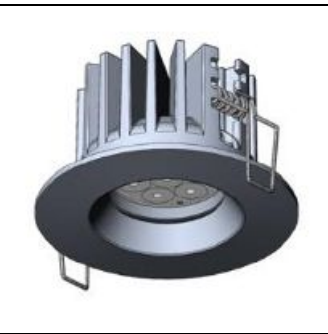


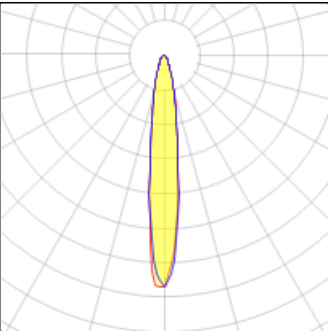
# Product data sheet

MUNICH RECESSED DOWNLIGHTS  
MUN-80001-N-W40  
LIGMAN



- Lamp LED - CRI Ra > 80 - MacAdam Ellipse 3 SDCM - Colour Temperature 3000K ,4000K - Eco-friendly LED product for energy saving and visual consistency. - Modular design for easy maintenance with future proofing. - Propriety lens design for high LOR. - Reliable thermal management for long life and lumen maintenance. - Dimming options available. Excellent CRI for actual colour reproduction. White powder coated aluminium reflector - Die-cast aluminium / White or black coated - Die-cast aluminium heat sink / Excellent thermal Management.

## Light output 1 (integrated)



Lamp type	LED	CCT	4032 K
Nominal lamp power	12.4 W	CRI	80
Total flux	1026 lm	LOR	100%
Luminous efficacy	83 lm/W	Total power	12.4 W

## Mounting mode

Ceiling recessed

## Shape and measurements

Height: 2.68 in  
Diameter: 3.94 in  
Weight: 0.2 kg

## Adjustability

Fixed

## Design

Color of housing: Black, White, Silver gray

## Glare protection

Glare protection: UGR < 19

## Electric

System power: 12.4 W  
Voltage: 230 V AC  
Ballast: ECG  
Controller: Dimmable 1..10V, DALI  
Appliance Class: III

## Protection

IP: 65  
Surface temperature: 40°C  
Designation labels: CE