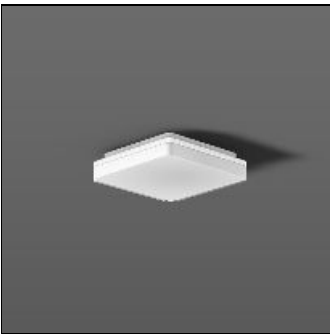


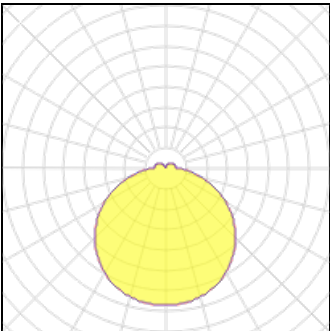
Product data sheet

HB 506
221188.002.2
RZB

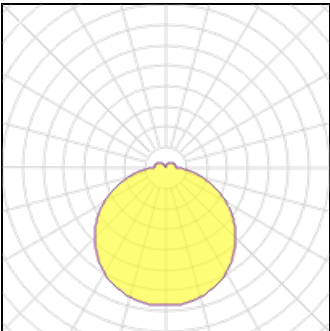


Series: HB 506 Ceiling and wall luminaire with slim design. Housing: plastic (polycarbonate). Diffuser: plastic (polycarbonate), opal. Base and diffuser are sealed together. MultiColour: Colour temperature adjustable via switching element. Choice of 3000K or 4000K. Factory setting is 3000K. Quick mounting adapter galvanized steel sheet, with fastening screws. Driver integrated. Colour: white
Length: 210mm Width: 210mm Height: 53mm Lamp: LED Socket: without socket Colour temperature: 3000K, 4000K
Colour rendering index (CRI): 80 System power: 15W Rated luminous flux: 1350lm Luminous efficiency: 90lm/W System power 2: 15W Rated luminous flux 2: 1400lm Luminous efficiency 2: 93lm/W Control gear: EB Protection class: I Type of protection: IP20

Light output 1



1 x LED			
Nominal lamp power	15 W	LOR	100%
Lamp flux	1400 lm	ULOR	11%
Luminous efficacy	93 lm/W	Total flux	1400 lm
CCT	4000 K	Total power	15 W
CRI	80		



1 x LED			
Nominal lamp power	15 W	LOR	100%
Lamp flux	1350 lm	ULOR	11%
Luminous efficacy	90 lm/W	Total flux	1350 lm
CCT	3000 K	Total power	15 W
CRI	80		

Mounting mode

Ceiling mounted

Electric

System power: 15 W

Shape and measurements

Length: 8.27 in

Width: 8.27 in

Height: 2.09 in

Protection

IP: 20

IK: 06

Adjustability

Fixed