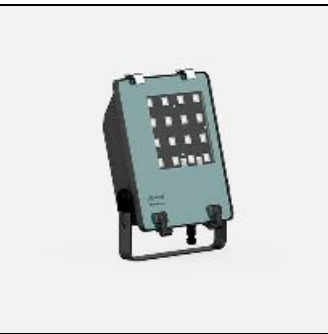


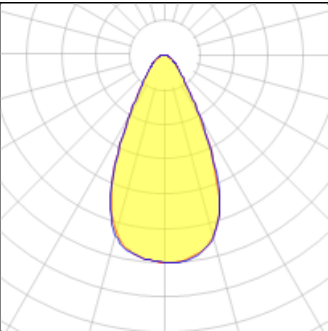
# Product data sheet

GANDALF 26 FLOODLIGHTS,PROJECTORS  
GA-51111-W-W40  
LIGMAN



- Lamp LED - CRI Ra > 80 - MacAdam Ellipse 3 SDCM - Colour 3000K , 4000K - Die-cast aluminium housing pre-treated before powder coating ensuring high corrosion resistance - Single cable entry - Through wiring on request - Stainless steel fasteners in grade 316 - Durable silicone rubber gasket - High-efficiency PMMA lens - Clear toughened glass - Hot-dipped galvanised steel mounting bracket allows for ceiling, wall or surface mounting - Integral control gear

## Light output 1 (integrated)



Lamp type	LED	CCT	4032 K
Nominal lamp power	54.4 W	CRI	80
Total flux	5860 lm	LOR	100%
Luminous efficacy	108 lm/W	Total power	54.4 W

## Mounting mode

Standing / Bollard, Wall mounted

## Shape and measurements

Length: 18.31 in  
Width: 12.60 in  
Height: 4.72 in  
Weight: 7 kg

## Adjustability

Free

## Design

Color of housing: Black, White, Silver gray

## Glare protection

Glare protection: UGR < 19

## Electric

System power: 54.4 W  
Voltage: 230 V AC  
Ballast: ECG  
Controller: Dimmable 1..10V, DALI  
Appliance Class: I

## Protection

IP: 66  
IK: 08  
Surface temperature: 40°C