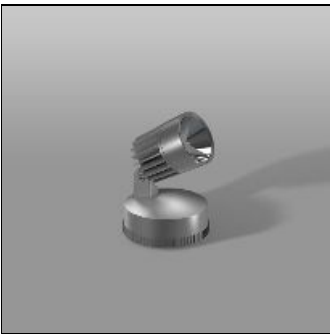


# Product data sheet

ALU-STAR MINI  
721804.004.1  
RZB

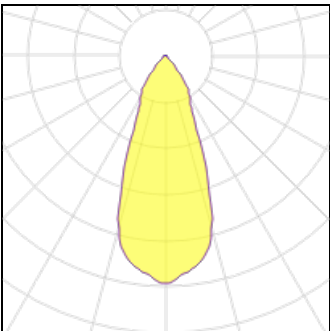


IP  
65

IK  
07

Series: ALU-STAR mini High efficient LED outdoor floodlight. Housing made of corrosion-resistant die-cast aluminium, seawater resistant powder-coated. Thermally decoupled driver compartment, integral driver. With membrane valve as a standard to avoid condensed water. Rotation-symmetric reflector made of reflex-boosted MIRO-SILVER. Cover clear single-pane toughened glass. Spot, wide beam. COB LED with socket for easy replacement. Stainless steel fixing clips with compensation for drill hole deviations. Rotation angle can be adjusted and locked in 3°/degree steps, tilt angle in 5°/degree steps with angular scale. Piano-key terminal up to 2x 5x 2,5 mm², max cable Ø 13 mm, comes with second cable gland for loop through. Colour: silver, matt (approx. RAL 9006) Length: 210 mm Width: 180 mm Height: 200 mm Lamp: LED System power: 40 W Rated luminous flux: 4550 lm Luminous efficiency: 114 lm/W Control gear: Regulated power supply Protection class: I Type of protection: IP65

## Light output 1 (integrated)



Lamp type	LED	CCT	4000 K
Nominal lamp power	40 W	CRI	80
Total flux	4550 lm	LOR	100%
Luminous efficacy	114 lm/W	Total power	40 W

## Mounting mode

Standing / Bollard, Pole integrated

## Shape and measurements

Length: 7.09 in  
Width: 8.27 in  
Height: 7.87 in

## Adjustability

Tiltable

## Electric

System power: 40 W

## Protection

IP: 65  
IK: 07