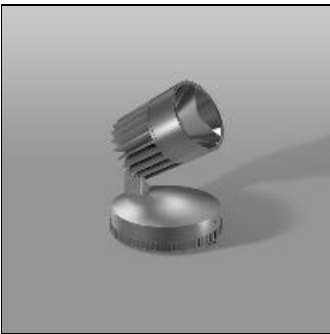


# Product data sheet

ALU-STAR MIDI  
721807.004.76  
RZB

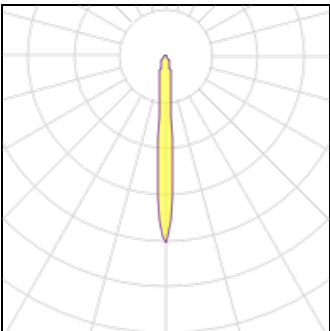


IP  
65

IK  
07

Series: ALU-STAR midi High efficient LED outdoor floodlight. Housing made of corrosion-resistant die-cast aluminium, seawater resistant powder-coated. Thermally decoupled driver compartment, integral driver. With membrane valve as a standard to avoid condensed water. Rotation-symmetric reflector made of reflex-boosted MIRO-SILVER. Cover clear single-pane toughened glass. Spot, narrow beam. COB LED with socket for easy replacement. Stainless steel fixing clips with compensation for drill hole deviations. Rotation angle can be adjusted and locked in 3,6° steps, tilt angle in 5° steps with angular scale. Piano-key terminal up to 28x5x2,5 mm², max cable Ø 13mm, comes with second cable gland for loop through. Colour: silver, matt (approx. RAL9006) Length: 255mm Width: 240mm Height: 255mm Lamp: LED System power: 57W Rated luminous flux: 5100lm Luminous efficiency: 89lm/W Control gear: Converter, dimmable, DALI Protection class: I Type of protection: IP65

## Light output 1 (integrated)



Lamp type	LED	CCT	3000 K
Nominal lamp power	57 W	CRI	80
Total flux	5100 lm	LOR	100%
Luminous efficacy	89 lm/W	Total power	57 W

## Mounting mode

Standing / Bollard, Pole integrated

## Shape and measurements

Length: 9.45 in  
Width: 10.04 in  
Height: 10.04 in

## Adjustability

Tiltable

## Electric

System power: 57 W

## Protection

IP: 65  
IK: 07