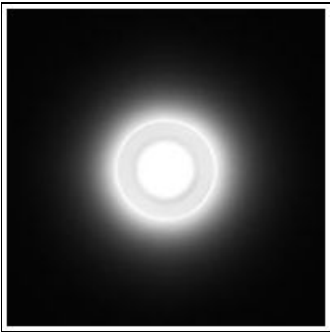


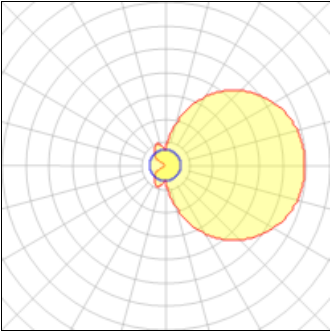
Product data sheet

RHO LED
517072
FLOS



• Recessed light for outdoor installation on wall, ceiling or ground. • Configuration: turned aluminium body (EN AW 6060) with 15 micron anodizing for high resistance to corrosion. Methacrylate diffuser.

Light output 1 (integrated)



Lamp type	LED	CCT	4000 K
Nominal lamp power	2.3 W	CRI	80
Total flux	13 lm	LOR	100%
Luminous efficacy	6 lm/W	ULOR	50%
		Total power	2.3 W

Mounting mode

Wall recessed

Shape and measurements

Height: 2.05 in
Diameter: 1.93 in

Adjustability

Fixed

Electric

System power: 2.3 W
Appliance Class: III

Protection

IP: 67
IK: 06